

AD040 morsettiera senza viti screwless terminal block

Senza viti
Screwless
Omologata GWT 960°C
Homologated GWT 960°C
Da 3 a 7 poli
From 3 to 7 poles
RAST 5



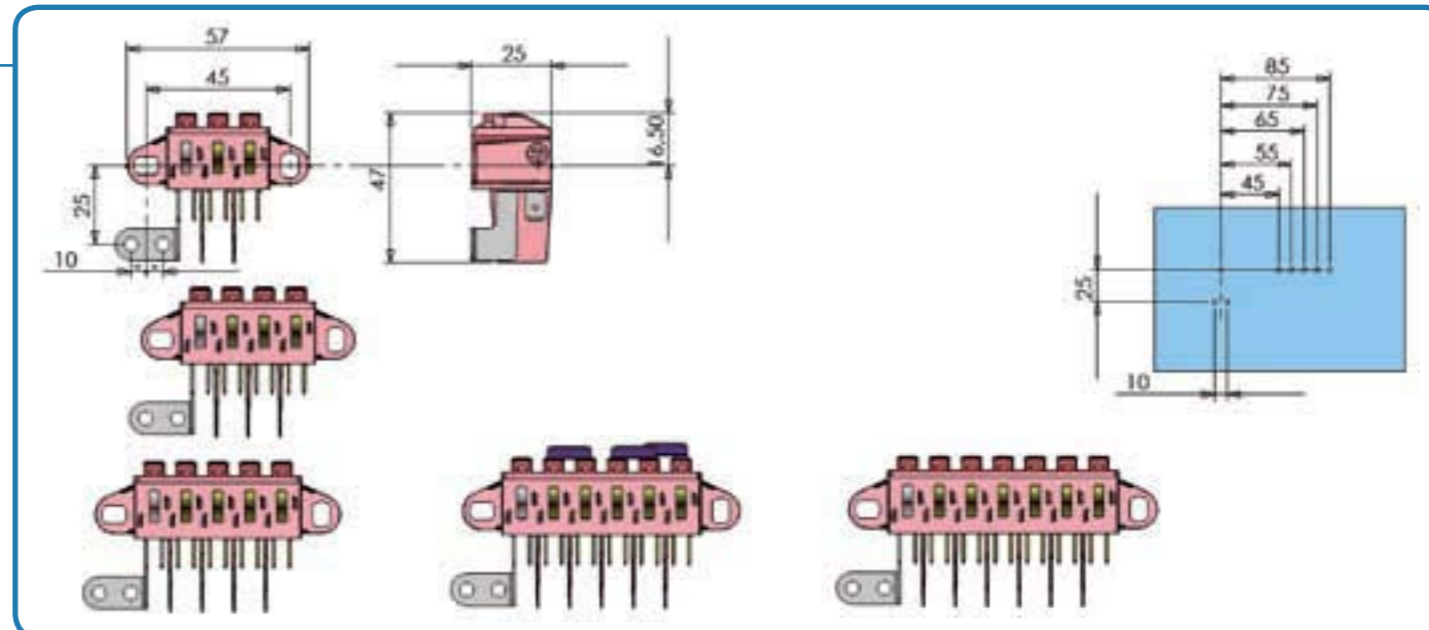
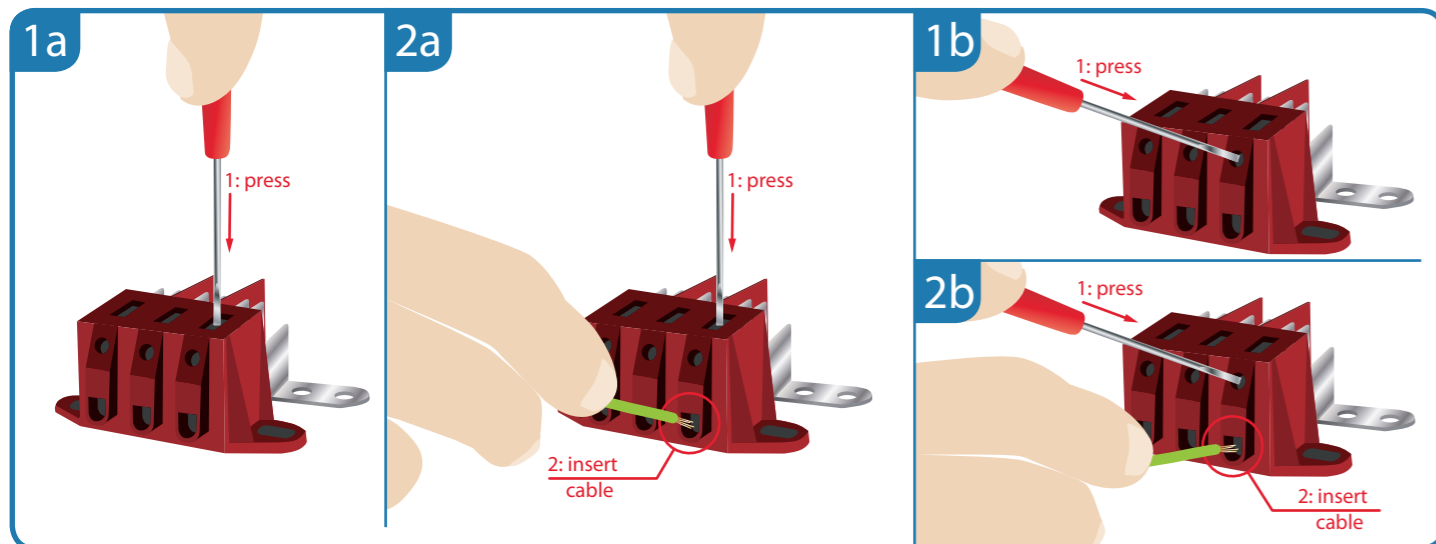
Patented  

CARATTERISTICHE COSTRUTTIVE

- A) Corpo in poliammide 6/6 a base fosforosa (colore rosso)
- B) Collegamenti senza viti
- C) Messa a terra tramite n° 2 viti autofil. 4,2x9,5 come richiesto da normativa
- D) 4 faston 6,3x0,8 in uscita per polo. Su richiesta connettori rast 5 polarizzabili
- E) Fissaggio all'apparecchio tramite viti. Su richiesta sistema fissaggio snap-in
- F) Accessorio: n° 3 ponticelli

CONSTRUCTIONAL FEATURES

- A) Body in 6/6 phosphorus polyamide (red)
- B) Screwless connections
- C) Grounding by 2 self-tapping 4.2x9.5 screws according to standard
- D) 4 x 6.3x0.8 output fastons per pole. RAST 5 polarisable connectors on request
- E) Screw fixing to appliance. Snap-in fixing available on request
- F) Accessory: 3 bridges



- » Predisposta per cablaggio automatizzato
- » Utilizzo di attrezzi di uso comune per cablaggi manuali e service
- » Da 3 a 7 poli (eventuali ponticelli)
- » 4 faston in uscita per polo
- » Predisposizione per test point
- » Inserimento agevole dei cavi
- » Sistema ponticellabile

- » Provision for automatic wiring
- » Only common tools needed for manual wiring and servicing
- » From 3 to 7 poles (or bridges)
- » 4 output fastons per pole
- » Provision for test points
- » Easy conductor insertion
- » Bridgeable system

DATI TECNICI	EUROPA	USA			
Norme di riferimento	EN 60998-1/2 EN 60335-1 EN 61210 (VDE 0513) UL 1977 CSA C22.2				
Standards	ENEC	UL	CSA		
Sezione cavo	da 3G1,5 a 3G6 mm ²	12 AWG	8 AWG	12 AWG	8 AWG
Tensione nominale	450 V	600V			
Corrente max	41 A	26A	36A	24A	30A
Temperatura d'esercizio	T 150° (short time 180°)				
Grado di protezione	IP 00				
Materiale	Poliammide rosso UL94 V0 GWT 960°				
Parti metalliche	Acciaio zincato RoHS conforme				

TECHNICAL DATA	EUROPA	USA			
Standard references	EN 60998-1/2 EN 60335-1 EN 61210 (VDE 0513) UL 1977 CSA C22.2				
Standards	ENEC	UL	CSA		
Cable section	from 3G1,5 to 3G6 mm ²	12 AWG	8 AWG	12 AWG	8 AWG
Nominal Voltage	450 V	600V			
Max. Rating	41 A	26A	36A	24A	30A
Working Temperature	T 150° (short time 180°)				
Protection degree	IP 00				
Material	Red polyamide UL94 - V0 GWT 960° C				
Metal parts	Zinc plated steel RoHS compliant				

TIPO	POLI	CODICE	IMBALLO
TYPE	POLES	CODE	PACK
AD040/3	3	2AD04030000000	
AD040/3/G	3 c/staffa terra / with grounding tab	2AD0403G0000000	400 pz.
AD040/4	4	2AD04040000000	
AD040/4/G	4 c/staffa terra / with grounding tab	2AD0404G0000000	300 pz.
AD040/5	5	2AD04050000000	
AD040/5/G	5 c/staffa terra / with grounding tab	2AD0405G0000000	
AD040/6	6	2AD04060000000	
AD040/6/G	6 c/staffa terra / with grounding tab	2AD0406G0000000	250 pz.
AD040/7	7	2AD04070000000	
AD040/7/G	7 c/staffa terra / with grounding tab	2AD0407G0000000	